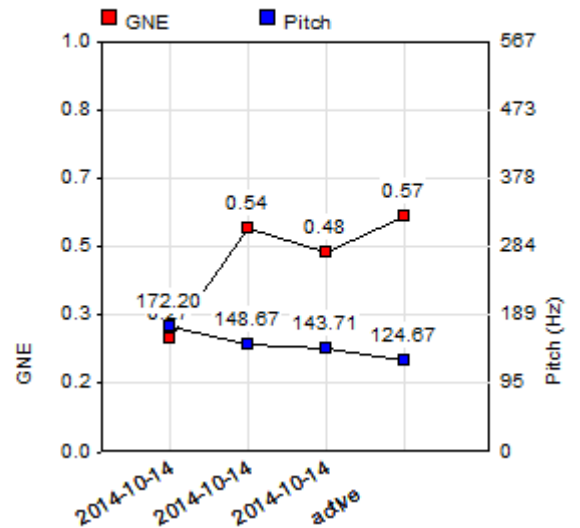
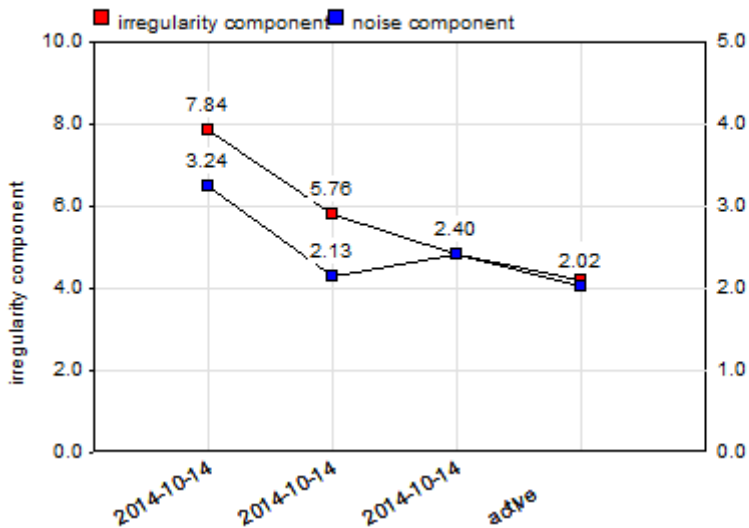
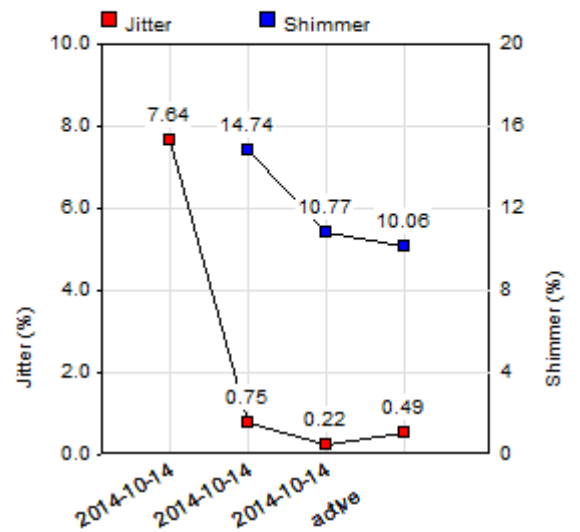
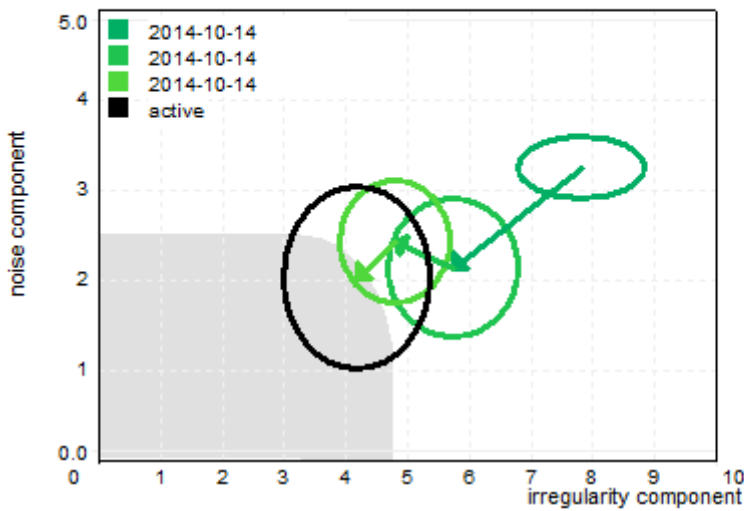


Trend



Göttingen Hoarseness Diagram

2014/10/15

Franke Ingolf, 1966 / 08 / 13

LW1001

Mode	n	Period - correlation	Jitter (%)	Shimmer (%)	GNE	F0 [Hz]	Irreg. - component	Noise - component
[ä:] normal	15	0.985	0.17	5.5	0.69	135.06	4.4 (0.21)	1.5 (0.29)
[a:] normal	17	0.981	0.13	10.3	0.67	105.70	4.8 (0.26)	1.6 (0.16)
[e:] normal	15	0.993	0.11	5.2	0.78	116.87	3.9 (0.16)	1.1 (0.28)
[i:] normal	16	0.993	0.16	8.7	0.72	137.58	4.3 (0.32)	1.4 (0.10)
[o:] normal	16	0.999	0.09	5.3	0.36	127.87	2.9 (0.28)	2.9 (0.45)
[u:] normal	19	0.979	0.19	9.3	0.14	123.74	4.6 (0.86)	3.8 (0.24)
[ä:] normal								
[ä:] low pitch	13	0.980	0.22	12.7	0.46	103.06	5.2 (0.24)	2.5 (0.11)
[a:] low pitch	13	0.977	0.12	10.8	0.37	105.04	4.9 (0.32)	2.8 (0.10)
[e:] low pitch	11	0.982	0.26	8.2	0.53	108.10	4.9 (0.12)	2.2 (0.20)
[i:] low pitch	14	0.988	0.22	5.2	0.53	105.39	4.3 (0.31)	2.2 (0.32)
[o:] low pitch	15	0.991	0.30	7.4	0.13	107.03	4.6 (0.23)	3.8 (0.14)
[u:] low pitch	15	0.983	0.46	9.1	0.09	103.74	4.7 (0.85)	4.0 (0.12)
[ä:] low pitch	14	0.971	0.22	10.4	0.45	110.91	5.1 (0.35)	2.5 (0.21)
[ä:] high pitch	16	0.996	0.15	4.3	0.53	147.28	3.2 (0.45)	2.2 (0.98)
[a:] high pitch	15	0.948	8.66	88.3	1.00	163.62	8.4 (0.02)	0.2 (0.00)
[e:] high pitch	16	0.994	0.16	4.4	0.65	177.23	3.8 (0.15)	1.7 (0.52)
[i:] high pitch	16	0.996	0.09	2.4	0.78	158.57	3.0 (0.21)	1.1 (0.14)
[o:] high pitch	17	0.999	0.05	4.3	0.63	164.71	2.3 (0.25)	1.8 (0.35)
[u:] high pitch								
[ä:] high pitch	20	0.988	0.20	4.9	0.67	153.00	4.0 (0.75)	1.6 (0.38)
[ä:] after load	16	0.984	0.17	7.3	0.78	109.49	4.6 (0.16)	1.2 (0.05)
[a:] after load	17	0.988	0.11	7.8	0.75	120.20	4.4 (0.22)	1.3 (0.09)
[e:] after load	17	0.993	0.11	5.9	0.80	107.46	3.9 (0.20)	1.1 (0.36)
[i:] after load	12	0.996	0.13	2.0	0.74	105.48	3.0 (0.21)	1.3 (0.08)
[o:] after load	19	0.996	0.12	7.2	0.65	115.59	3.6 (0.48)	1.7 (0.51)
[u:] after load	20	0.999	0.07	3.0	0.18	119.12	2.3 (0.38)	3.6 (0.22)
[ä:] after load	17	0.982	0.21	11.7	0.77	109.61	5.0 (0.16)	1.2 (0.06)
mean	15.81	0.99	0.49	10.06	0.57	124.67	4.19 (1.23)	2.02 (1.03)